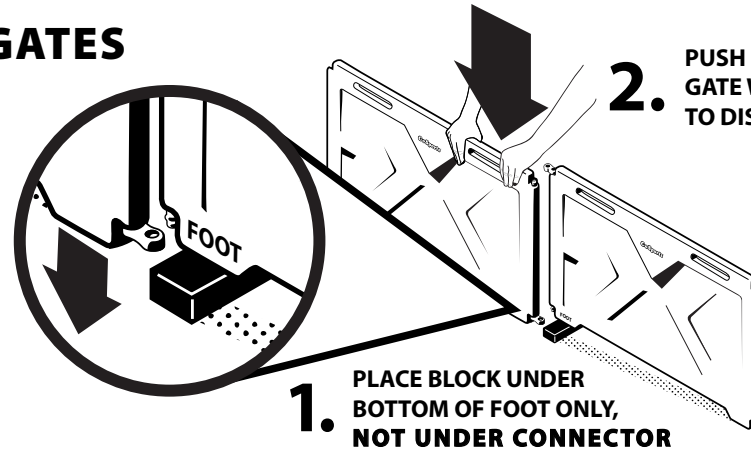


DISCONNECT GATES



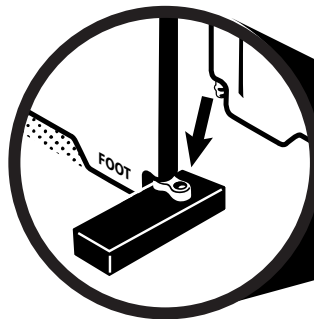
1. PLACE BLOCK UNDER BOTTOM OF FOOT ONLY, NOT UNDER CONNECTOR

2. PUSH DOWN OPPOSITE GATE WITH BOTH HANDS TO DISCONNECT

CONNECT GATES

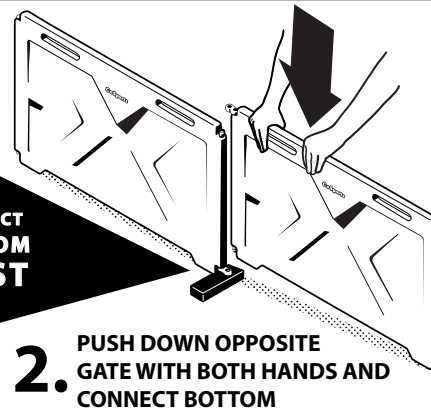


CONNECTOR
PIECE

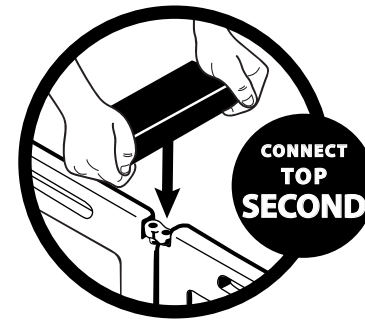


CONNECT
BOTTOM
FIRST

1. PLACE BLOCK UNDER BOTTOM CONNECTOR PIECE ONLY. NOT UNDER THE FOOT.



2. PUSH DOWN OPPOSITE GATE WITH BOTH HANDS AND CONNECT BOTTOM



3. CONNECT TOP CONNECTOR BY PUSHING DOWN USING BOTH HANDS ON BLOCK